

ESTIMATED QUANTITIES (ONE 0° SKEWED APPROACH SLAB)						
BAR	NO.	SHORT BAR	VAR. (IN.)	LONG BAR	TOTAL LENGTH	LOCATION
1001	80	-	-	39'-8"	3173'-4"	LONG. IN BOT. OF SLAB
1002	4	-	-	32'-10"	131'-4"	BOTTOM OF EDGE BEAMS
1003	4	-	-	32'-10"	131'-4"	BOTTOM OF EDGE BEAMS
-	-	-	-	-	-	-
-	-	-	-	-	-	-
TOTAL NO. 10 BARS = 3436'-0" = 14,785 LBS						
801	80	-	-	39'-8"	3173'-4"	LONG. IN TOP OF SLAB
802	160	-	-	39'-8"	6346'-8"	TRANSV. IN TOP & BOT. OF SLAB
-	-	-	-	-	-	-
-	-	-	-	-	-	-
-	-	-	-	-	-	-
-	-	-	-	-	-	-
-	-	-	-	-	-	-
TOTAL NO. 8 BARS = 9520'-0" = 25,418 LBS						
501	14	-	-	39'-8"	555'-4"	TOP & BOT. OF SLEEPER SLAB
502	106	-	-	4'-8"	494'-8"	TOP & BOT. OF SLEEPER SLAB
TOTAL NO. 5 BARS = 1050'-0" = 1,095 LBS						
401	44	-	-	2'-7"	113'-8"	DOWELS IN CURBS
402	2	-	-	13'-1"	26'-2"	LONG. IN CURBS
403	66	-	-	2'-2"	143'-0"	STIRRUPS IN EDGE BEAMS
404	2	-	-	39'-8"	79'-4"	BOTTOM OF HAUNCH
405	51	-	-	4'-8"	238'-0"	STIRRUPS IN HAUNCH
406	4	-	-	13'-2"	52'-8"	LONG. IN CURBS
-	-	-	-	-	-	-
TOTAL NO. 4 BARS = 652'-10" = 436 LBS						
TOTAL DEFORMED REINFORCING STEEL 41,734 LBS.						
CONCRETE APPROACH SLAB 1,600 SQ. FT.						

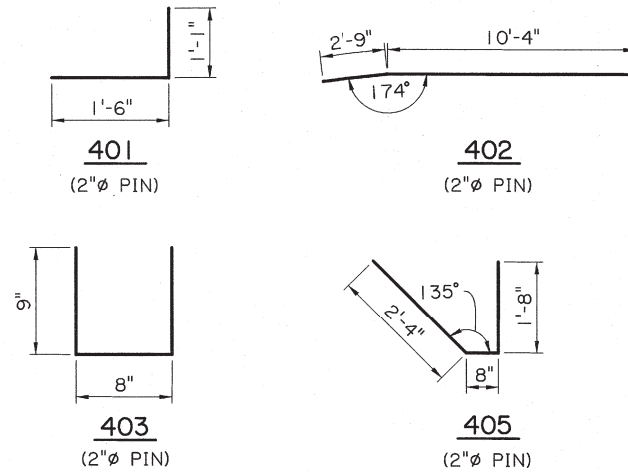
ESTIMATED QUANTITIES (ONE 30° SKEWED APPROACH SLAB)						
BAR	NO.	SHORT BAR	VAR. (IN.)	LONG BAR	TOTAL LENGTH	LOCATION
1001	80	28'-2"	3.49"	51'-0"	3166'-8"	LONG. IN BOT. OF SLAB
1002	4	-	-	43'-11"	175'-8"	BOTTOM OF EDGE BEAMS
1003	4	-	-	21'-4"	85'-4"	BOTTOM OF EDGE BEAMS
-	-	-	-	-	-	-
-	-	-	-	-	-	-
TOTAL NO. 10 BARS = 3427'-8" = 14,749 LBS						
801	80	28'-2"	3.49"	51'-0"	3166'-8"	LONG. IN TOP OF SLAB
802	114	-	-	39'-8"	4522'-0"	TRANSV. IN TOP & BOT. OF SLAB
803	88	1'-9"	10.37"	38'-11"	1789'-4"	TRANSV. IN TOP & BOT. OF SLAB
804	4	-	-	45'-9"	183'-0"	TOP & BOT. OF SLAB ALONG SKEW
-	-	-	-	-	-	-
-	-	-	-	-	-	-
-	-	-	-	-	-	-
-	-	-	-	-	-	-
TOTAL NO. 8 BARS = 9661'-0" = 25,795 LBS						
501	14	-	-	39'-8"	555'-4"	TOP & BOT. OF SLEEPER SLAB
502	106	-	-	4'-8"	494'-8"	TOP & BOT. OF SLEEPER SLAB
TOTAL NO. 5 BARS = 1050'-0" = 1,095 LBS						
401	44	-	-	2'-7"	113'-8"	DOWELS IN CURBS
402	2	-	-	13'-1"	26'-2"	LONG. IN CURBS
403	65	-	-	2'-2"	140'-10"	STIRRUPS IN EDGE BEAMS
404	2	-	-	47'-6"	95'-0"	BOTTOM OF HAUNCH
405	59	-	-	4'-8"	275'-4"	STIRRUPS IN HAUNCH
406	4	-	-	13'-2"	52'-8"	LONG. IN CURBS
-	-	-	-	-	-	-
TOTAL NO. 4 BARS = 703'-8" = 470 LBS						
TOTAL DEFORMED REINFORCING STEEL 42,109 LBS.						
CONCRETE APPROACH SLAB 1,600 SQ. FT.						

ESTIMATED QUANTITIES (ONE 15° SKEWED APPROACH SLAB)						
BAR	NO.	SHORT BAR	VAR. (IN.)	LONG BAR	TOTAL LENGTH	LOCATION
1001	80	34'-4"	1.60"	44'-11"	3170'-0"	LONG. IN BOT. OF SLAB
1002	4	-	-	38'-0"	152'-0"	BOTTOM OF EDGE BEAMS
1003	4	-	-	27'-6"	110'-0"	BOTTOM OF EDGE BEAMS
-	-	-	-	-	-	-
-	-	-	-	-	-	-
TOTAL NO. 10 BARS = 3432'-0" = 14,768 LBS						
801	80	34'-4"	1.60"	44'-11"	3170'-0"	LONG. IN TOP OF SLAB
802	138	-	-	39'-8"	5474'-0"	TRANSV. IN TOP & BOT. OF SLAB
803	40	3'-4"	22.37"	38'-9"	841'-8"	TRANSV. IN TOP & BOT. OF SLAB
804	4	-	-	41'-0"	164'-0"	TOP & BOT. OF SLAB ALONG SKEW
-	-	-	-	-	-	-
-	-	-	-	-	-	-
-	-	-	-	-	-	-
-	-	-	-	-	-	-
TOTAL NO. 8 BARS = 9649'-8" = 25,765 LBS						
501	14	-	-	39'-8"	555'-4"	TOP & BOT. OF SLEEPER SLAB
502	106	-	-	4'-8"	494'-8"	TOP & BOT. OF SLEEPER SLAB
TOTAL NO. 5 BARS = 1050'-0" = 1,095 LBS						
401	44	-	-	2'-7"	113'-8"	DOWELS IN CURBS
402	2	-	-	13'-1"	26'-2"	LONG. IN CURBS
403	65	-	-	2'-2"	140'-10"	STIRRUPS IN EDGE BEAMS
404	2	-	-	42'-9"	85'-6"	BOTTOM OF HAUNCH
405	53	-	-	4'-8"	247'-4"	STIRRUPS IN HAUNCH
406	4	-	-	13'-2"	52'-8"	LONG. IN CURBS
-	-	-	-	-	-	-
TOTAL NO. 4 BARS = 666'-2" = 445 LBS						
TOTAL DEFORMED REINFORCING STEEL 42,073 LBS.						
CONCRETE APPROACH SLAB 1,600 SQ. FT.						

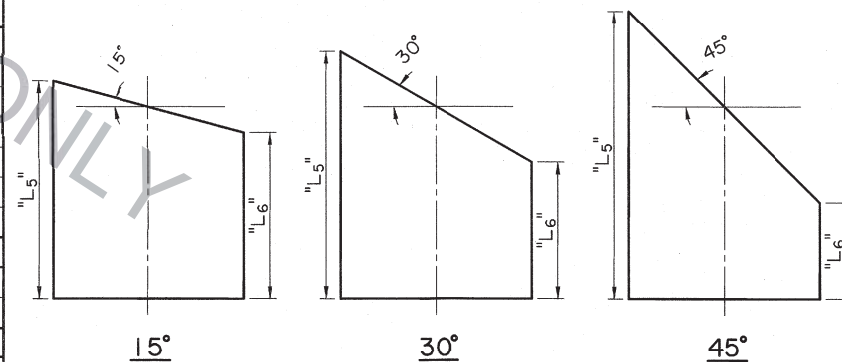
ESTIMATED QUANTITIES (ONE 45° SKEWED APPROACH SLAB)						
BAR	NO.	SHORT BAR	VAR. (IN.)	LONG BAR	TOTAL LENGTH	LOCATION
1001	80	19'-10"	6.0"	59'-4"	3166'-8"	LONG. IN BOT. OF SLAB
1002	4	-	-	52'-0"	208'-0"	BOTTOM OF EDGE BEAMS
1003	4	-	-	13'-0"	52'-0"	BOTTOM OF EDGE BEAMS
-	-	-	-	-	-	-
-	-	-	-	-	-	-
TOTAL NO. 10 BARS = 3426'-8" = 14,745 LBS						
801	80	19'-10"	6.0"	59'-4"	3166'-8"	LONG. IN TOP OF SLAB
802	80	-	-	39'-8"	3173'-4"	TRANSV. IN TOP & BOT. OF SLAB
803	152	1'-10"	6.0"	39'-4"	3128'-8"	TRANSV. IN TOP & BOT. OF SLAB
804	4	-	-	56'-1"	224'-4"	TOP & BOT. OF SLAB ALONG SKEW
-	-	-	-	-	-	-
-	-	-	-	-	-	-
-	-	-	-	-	-	-
-	-	-	-	-	-	-
TOTAL NO. 8 BARS = 9693'-0" = 25,880 LBS						
501	14	-	-	39'-8"	555'-4"	TOP & BOT. OF SLEEPER SLAB
502	106	-	-	4'-8"	494'-8"	TOP & BOT. OF SLEEPER SLAB
TOTAL NO. 5 BARS = 1050'-0" = 1,095 LBS						
401	44	-	-	2'-7"	113'-8"	DOWELS IN CURBS
402	2	-	-	13'-1"	26'-2"	LONG. IN CURBS
403	66	-	-	2'-2"	143'-0"	STIRRUPS IN EDGE BEAMS
404	2	-	-	57'-10"	115'-8"	BOTTOM OF HAUNCH
405	72	-	-	4'-8"	336'-0"	STIRRUPS IN HAUNCH
406	4	-	-	13'-2"	52'-8"	LONG. IN CURBS
-	-	-	-	-	-	-
TOTAL NO. 4 BARS = 787'-2" = 526 LBS						
TOTAL DEFORMED REINFORCING STEEL 42,246 LBS.						
CONCRETE APPROACH SLAB 1,600 SQ. FT.						

NOTES:

- 1. QUANTITIES SHOWN FOR 401, 402 AND 406 BARS ARE FOR A 13'-6" CURB (SEE APPROACH SLAB DETAIL "P"). ADJUST QUANTITIES AS NEEDED FOR LONGER CURBS OR FOR "BRIDGE END DRAIN SYSTEM" INSTALLATIONS. BRIDGES WITHOUT GUARDRAIL OR END DRAINS DO NOT REQUIRE A CURB, UNLESS OTHERWISE STATED IN THE PLANS.
- 2. ALL MATERIAL TO BE PAID FOR UNDER ITEM "CONCRETE APPROACH SLABS (CAST-IN-PLACE)." QUANTITIES ARE FOR INFORMATION PURPOSES ONLY.
- 3. FOR HANDLING PURPOSES, #4 BARS OVER 40' MAY BE SPLICED WITH A 1'-9" MIN. LAP SPLICE. ALL SPLICES TO BE STAGGERED. (1'-9" SPLICE INCLUDED IN ESTIMATED QUANTITIES.)

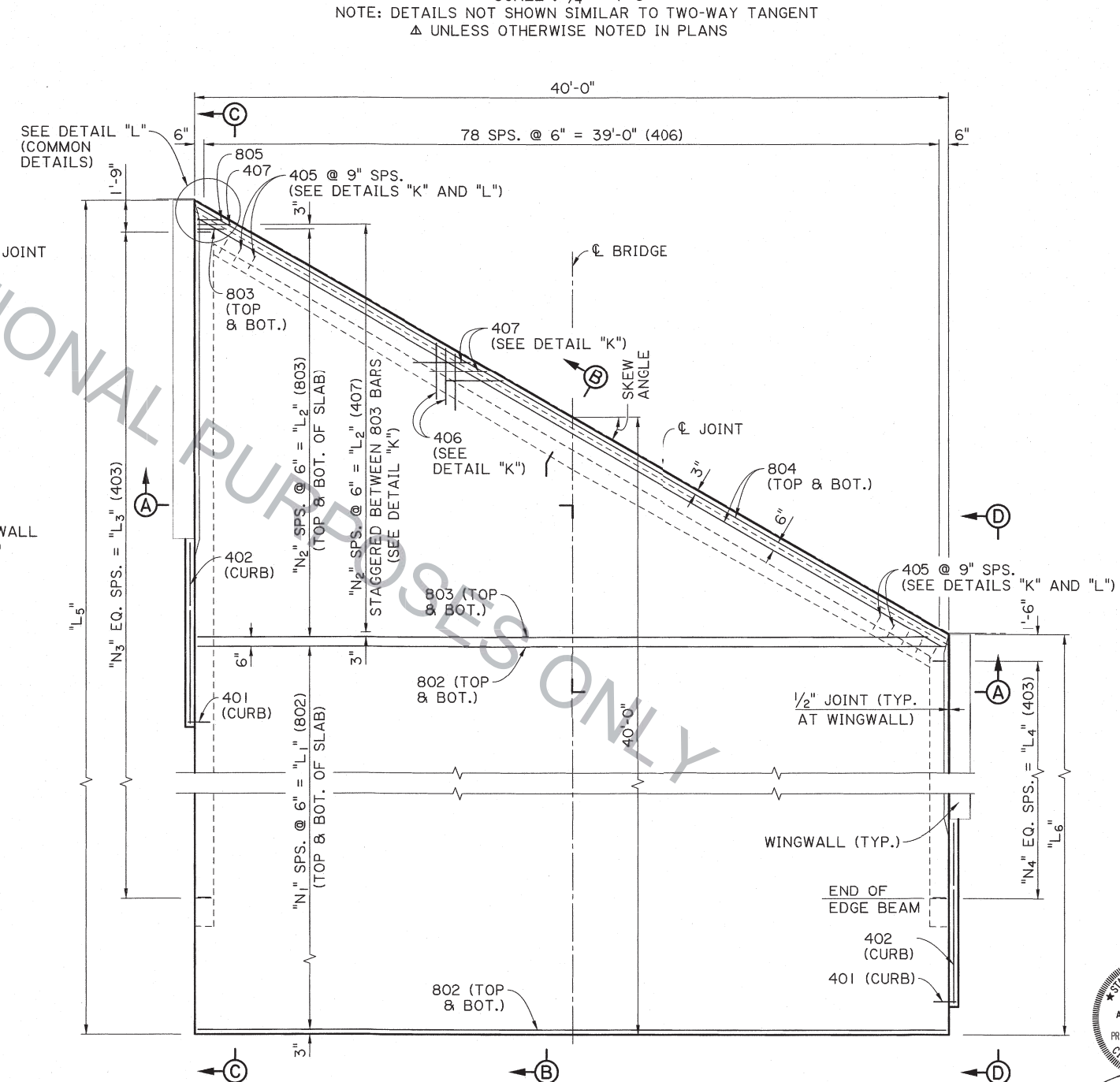
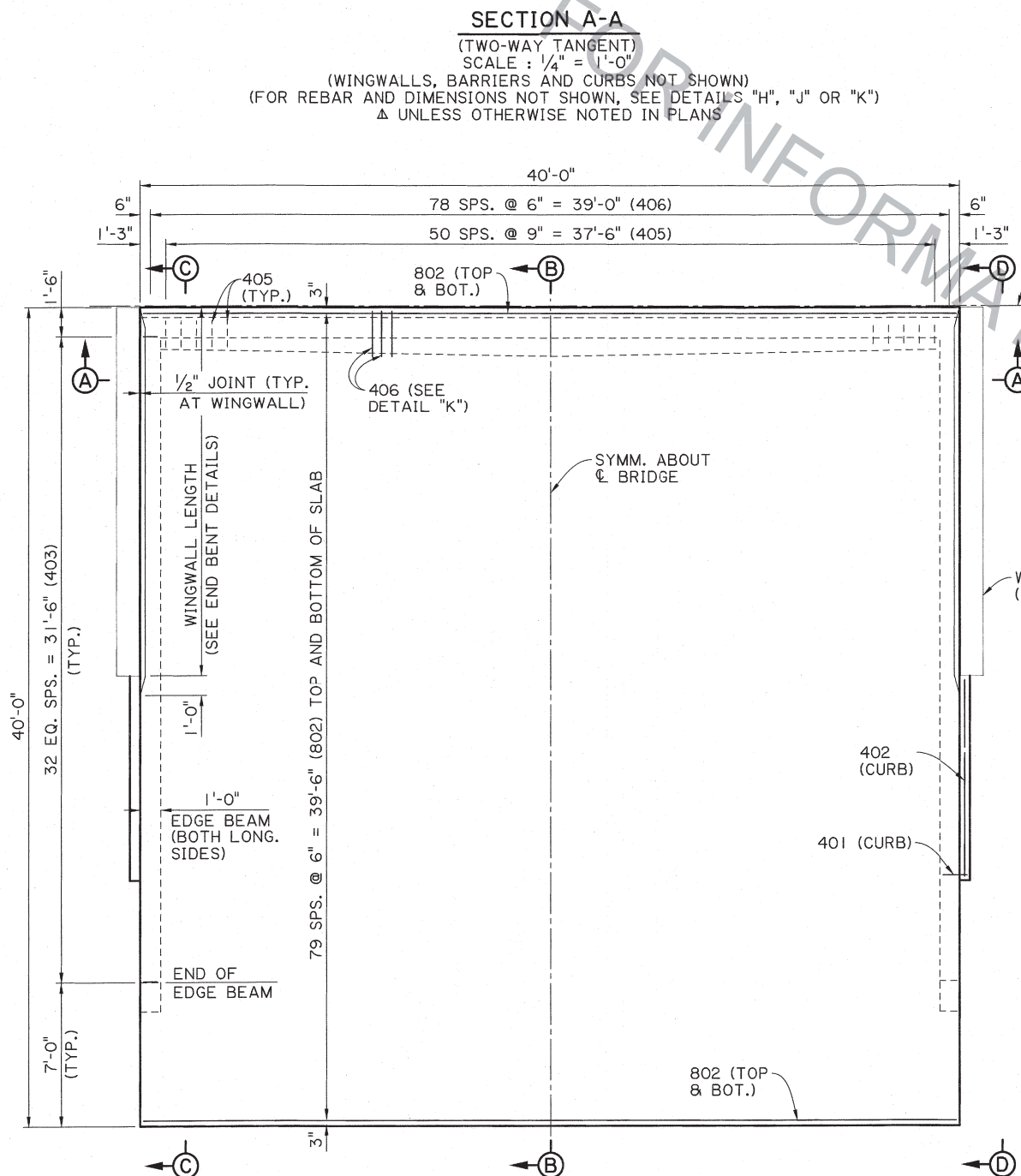
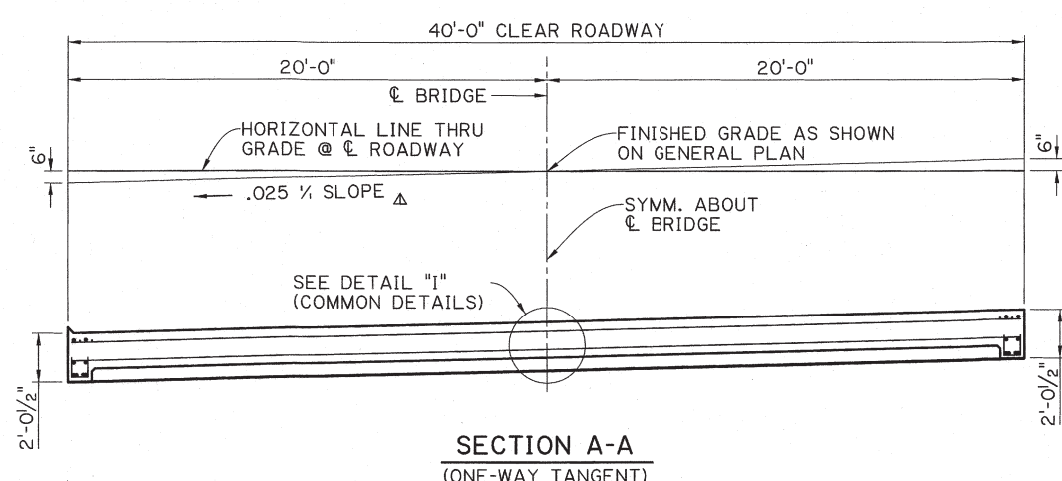
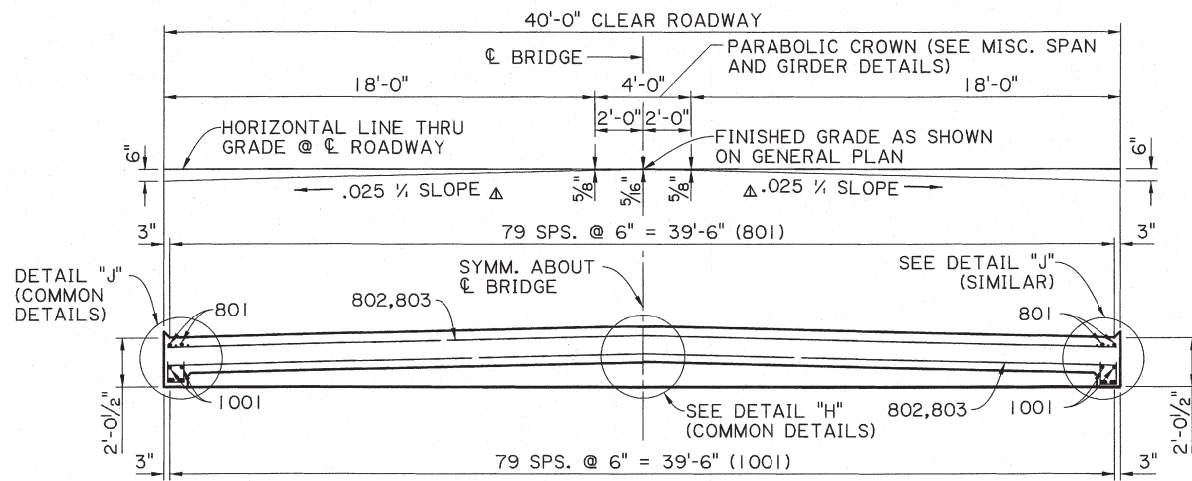


VARIABLES (SEE PLAN VIEW, SHT. 1 OF 2)			
VARIABLE	15° SKEW	30° SKEW	45° SKEW
N ₁	68	56	39
N ₂	19	43	75
N ₃	37	43	52
N ₄	26	20	12
L ₁	34'-0"	28'-0"	19'-6"
L ₂	9'-6"	21'-6"	37'-6"
L ₃	36'-7"	42'-9"	51'-3"
L ₄	26'-1"	19'-11"	11'-6"
L ₅	45'-4 1/4"	51'-6 3/4"	60'-0"
L ₆	34'-7 3/4"	28'-5 1/2"	20'-0"

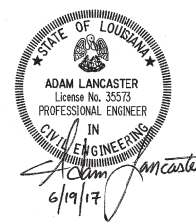


STATE OF LOUISIANA
 ADAM LANCASTER
 License No. 35573
 PROFESSIONAL ENGINEER
 IN
 CIVIL ENGINEERING
 6/19/17

SHEET NUMBER	PARISH	CONTROL SECTION	STATE PROJECT
DESIGNED A. LANCASTER	CHECKED R. MORVANT	DESIGNED A. LANCASTER	CONTROL SECTION
REVIEWED Z.Z. FU	SERIES # 2 OF 2	DATE	NO.
REVISION OR CHANGE ORDER DESCRIPTION			
BY			
DATE			
APPROACH SLAB QUANTITIES			
40' LONG & 40' CLEAR ROADWAY			
SLAB SPANS AND QUAD BEAM BRIDGES			
BD.2.10.2.6.02 - APPROACH SLAB			
BRIDGE AND STRUCTURAL DESIGN			



NOTE:
SEE APPROACH SLAB COMMON DETAILS FOR SECTIONS AND DETAILS NOT SHOWN.



SHEET NUMBER		PARISH		CONTROL SECTION		STATE PROJECT	
DESIGNED	A. LANCASTER	CHECKED	R. MORVANT	DRAWN	A. LANCASTER	REVIEWED	Z.Z. FU
SERIES # 1 OF 2		DATE		NO.		BY	
REVISION OR CHANGE ORDER DESCRIPTION							
APPROACH SLAB DETAILS 40' LONG & 40' CLEAR ROADWAY GIRDER SPANS EXCLUDING QUAD BEAMS							
BD.2.10.2.6.03 - APPROACH SLAB							
BRIDGE AND STRUCTURAL DESIGN							

ESTIMATED QUANTITIES (ONE 0° SKEWED APPROACH SLAB)						
BAR	NO.	SHORT BAR	VAR. (IN.)	LONG BAR	TOTAL LENGTH	LOCATION
1001	80	-	-	39'-2"	3133'-4"	LONG. IN BOT. OF SLAB
1002	4	-	-	32'-4"	129'-4"	BOTTOM OF EDGE BEAMS
1003	4	-	-	32'-4"	129'-4"	BOTTOM OF EDGE BEAMS
-	-	-	-	-	-	-
-	-	-	-	-	-	-
TOTAL NO. 10 BARS = 3392'-0" = 14,596 LBS						
801	80	-	-	39'-2"	3133'-4"	LONG. IN TOP OF SLAB
802	160	-	-	39'-8"	6346'-8"	TRANSV. IN TOP & BOT. OF SLAB
-	-	-	-	-	-	-
-	-	-	-	-	-	-
-	-	-	-	-	-	-
-	-	-	-	-	-	-
-	-	-	-	-	-	-
TOTAL NO. 8 BARS = 9480'-0" = 25,312 LBS						
501	14	-	-	39'-8"	555'-4"	TOP & BOT. OF SLEEPER SLAB
502	106	-	-	4'-8"	494'-8"	TOP & BOT. OF SLEEPER SLAB
TOTAL NO. 5 BARS = 1050'-0" = 1,095 LBS						
401	22	-	-	1'-10"	40'-4"	DOWELS IN CURBS
402	2	-	-	13'-1"	26'-2"	LONG. IN CURBS
403	66	-	-	2'-2"	143'-0"	STIRRUPS IN EDGE BEAMS
404	2	-	-	39'-8"	79'-4"	BOTTOM OF HAUNCH
405	51	-	-	4'-8"	238'-0"	STIRRUPS IN HAUNCH
406	79	-	-	3'-1"	243'-7"	LONG. IN TOP OF SLAB
-	-	-	-	-	-	-
TOTAL NO. 4 BARS = 770'-5" = 515 LBS						
TOTAL DEFORMED REINFORCING STEEL					41,518 LBS.	
CONCRETE APPROACH SLAB					1,600 SQ. FT.	

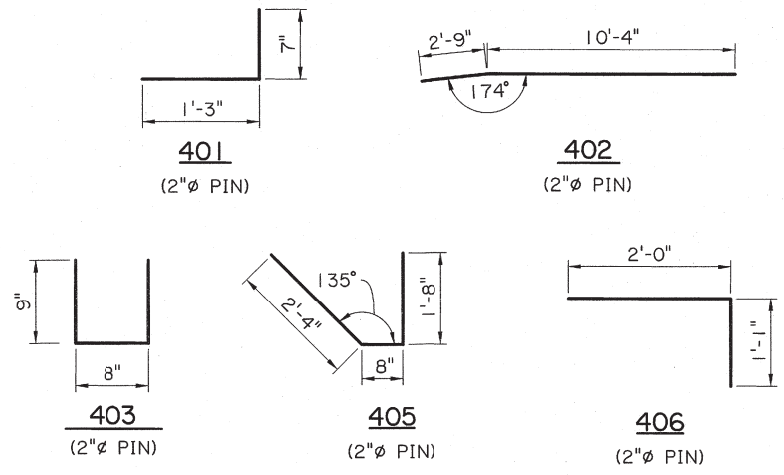
ESTIMATED QUANTITIES (ONE 30° SKEWED APPROACH SLAB)						
BAR	NO.	SHORT BAR	VAR. (IN.)	LONG BAR	TOTAL LENGTH	LOCATION
1001	80	27'-8"	3.47"	50'-6"	3126'-8"	LONG. IN BOT. OF SLAB
1002	4	-	-	43'-4"	173'-4"	BOTTOM OF EDGE BEAMS
1003	4	-	-	20'-11"	83'-8"	BOTTOM OF EDGE BEAMS
-	-	-	-	-	-	-
-	-	-	-	-	-	-
TOTAL NO. 10 BARS = 3383'-8" = 14,560 LBS						
801	80	27'-8"	3.47"	50'-6"	3126'-8"	LONG. IN TOP OF SLAB
802	112	-	-	39'-8"	4442'-8"	TRANSV. IN TOP & BOT. OF SLAB
803	88	1'-7"	10.40"	38'-10"	1778'-4"	TRANSV. IN TOP & BOT. OF SLAB
804	4	-	-	45'-9"	183'-0"	TOP & BOT. OF SLAB ALONG SKEW
805	4	-	-	1'-6"	6'-0"	CORNER OF SLAB
-	-	-	-	-	-	-
-	-	-	-	-	-	-
TOTAL NO. 8 BARS = 9536'-8" = 25,463 LBS						
501	14	-	-	39'-8"	555'-4"	TOP & BOT. OF SLEEPER SLAB
502	106	-	-	4'-8"	494'-8"	TOP & BOT. OF SLEEPER SLAB
TOTAL NO. 5 BARS = 1050'-0" = 1,095 LBS						
401	22	-	-	1'-10"	40'-4"	DOWELS IN CURBS
402	2	-	-	13'-1"	26'-2"	LONG. IN CURBS
403	65	-	-	2'-2"	140'-10"	STIRRUPS IN EDGE BEAMS
404	2	-	-	47'-6"	95'-0"	BOTTOM OF HAUNCH
405	59	-	-	4'-8"	275'-4"	STIRRUPS IN HAUNCH
406	79	-	-	3'-1"	243'-7"	LONG. IN TOP OF SLAB
407	44	-	-	2'-0"	88'-0"	TRANSV. IN TOP OF SLAB
TOTAL NO. 4 BARS = 909'-3" = 607 LBS						
TOTAL DEFORMED REINFORCING STEEL					41,725 LBS.	
CONCRETE APPROACH SLAB					1,600 SQ. FT.	

ESTIMATED QUANTITIES (ONE 15° SKEWED APPROACH SLAB)						
BAR	NO.	SHORT BAR	VAR. (IN.)	LONG BAR	TOTAL LENGTH	LOCATION
1001	80	33'-10"	1.60"	44'-5"	3130'-0"	LONG. IN BOT. OF SLAB
1002	4	-	-	37'-6"	150'-0"	BOTTOM OF EDGE BEAMS
1003	4	-	-	27'-0"	108'-0"	BOTTOM OF EDGE BEAMS
-	-	-	-	-	-	-
-	-	-	-	-	-	-
TOTAL NO. 10 BARS = 3388'-0" = 14,579 LBS						
801	80	33'-10"	1.60"	44'-5"	3130'-0"	LONG. IN TOP OF SLAB
802	136	-	-	39'-8"	5394'-8"	TRANSV. IN TOP & BOT. OF SLAB
803	42	1'-5"	22.40"	38'-9"	843'-6"	TRANSV. IN TOP & BOT. OF SLAB
804	4	-	-	41'-0"	164'-0"	TOP & BOT. OF SLAB ALONG SKEW
805	2	-	-	1'-6"	3'-0"	CORNER OF SLAB
-	-	-	-	-	-	-
-	-	-	-	-	-	-
TOTAL NO. 8 BARS = 9535'-2" = 25,459 LBS						
501	14	-	-	39'-8"	555'-4"	TOP & BOT. OF SLEEPER SLAB
502	106	-	-	4'-8"	494'-8"	TOP & BOT. OF SLEEPER SLAB
TOTAL NO. 5 BARS = 1050'-0" = 1,095 LBS						
401	22	-	-	1'-10"	40'-4"	DOWELS IN CURBS
402	2	-	-	13'-1"	26'-2"	LONG. IN CURBS
403	65	-	-	2'-2"	140'-10"	STIRRUPS IN EDGE BEAMS
404	2	-	-	42'-9"	85'-6"	BOTTOM OF HAUNCH
405	53	-	-	4'-8"	247'-4"	STIRRUPS IN HAUNCH
406	79	-	-	3'-1"	243'-7"	LONG. IN TOP OF SLAB
407	21	-	-	3'-0"	63'-0"	TRANSV. IN TOP OF SLAB
TOTAL NO. 4 BARS = 846'-9" = 566 LBS						
TOTAL DEFORMED REINFORCING STEEL					41,699 LBS.	
CONCRETE APPROACH SLAB					1,600 SQ. FT.	

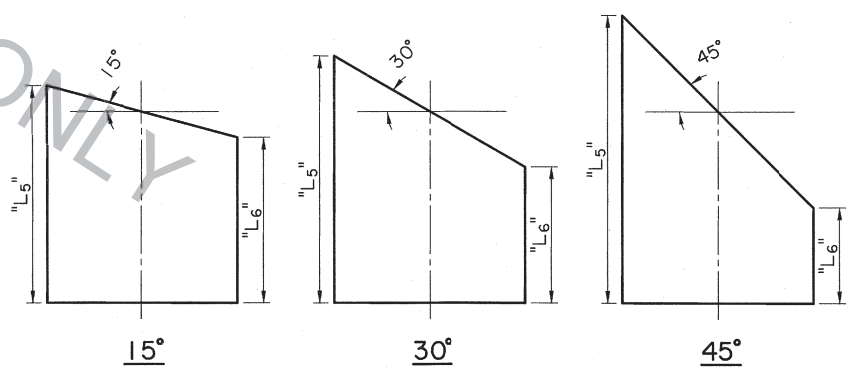
ESTIMATED QUANTITIES (ONE 45° SKEWED APPROACH SLAB)						
BAR	NO.	SHORT BAR	VAR. (IN.)	LONG BAR	TOTAL LENGTH	LOCATION
1001	80	19'-2"	6.0"	58'-8"	3113'-4"	LONGIT. IN BOT. OF SLAB
1002	4	-	-	51'-4"	205'-4"	BOTTOM OF EDGE BEAMS
1003	4	-	-	12'-4"	49'-4"	BOTTOM OF EDGE BEAMS
-	-	-	-	-	-	-
-	-	-	-	-	-	-
TOTAL NO. 10 BARS = 3368'-0" = 14,493 LBS						
801	80	19'-2"	6.0"	58'-8"	3113'-4"	LONGIT. IN TOP OF SLAB
802	78	-	-	39'-8"	3094'-0"	TRANSV. IN TOP & BOT. OF SLAB
803	152	1'-8"	6.0"	39'-2"	3103'-4"	TRANSV. IN TOP & BOT. OF SLAB
804	4	-	-	56'-1"	224'-4"	TOP & BOT. OF SLAB ALONG SKEW
805	6	-	-	1'-6"	9'-0"	CORNER OF SLAB
-	-	-	-	-	-	-
-	-	-	-	-	-	-
TOTAL NO. 8 BARS = 9544'-0" = 25,482 LBS						
501	14	-	-	39'-8"	555'-4"	TOP & BOT. OF SLEEPER SLAB
502	106	-	-	4'-8"	494'-8"	TOP & BOT. OF SLEEPER SLAB
TOTAL NO. 5 BARS = 1050'-0" = 1,095 LBS						
401	22	-	-	1'-10"	40'-4"	DOWELS IN CURBS
402	2	-	-	13'-1"	26'-2"	LONG. IN CURBS
403	66	-	-	2'-2"	143'-0"	STIRRUPS IN EDGE BEAMS
404	2	-	-	57'-10"	115'-8"	BOTTOM OF HAUNCH
405	72	-	-	4'-8"	336'-0"	STIRRUPS IN HAUNCH
406	79	-	-	3'-1"	243'-7"	LONG. IN TOP OF SLAB
407	76	-	-	2'-0"	152'-0"	TRANSV. IN TOP OF SLAB
TOTAL NO. 4 BARS = 1056'-9" = 706 LBS						
TOTAL DEFORMED REINFORCING STEEL					41,776 LBS.	
CONCRETE APPROACH SLAB					1,600 SQ. FT.	

NOTES:

- 1. QUANTITIES SHOWN FOR 401 AND 402 BARS ARE FOR A 13'-6" CURB (SEE APPROACH SLAB DETAIL "Q"). ADJUST QUANTITIES AS NEEDED FOR LONGER CURES OR FOR "BRIDGE END DRAIN SYSTEM" INSTALLATIONS. BRIDGES WITHOUT GUARDRAIL OR END DRAINS DO NOT REQUIRE A CURB, UNLESS OTHERWISE STATED IN THE PLANS.
- 2. ALL MATERIAL TO BE PAID FOR UNDER ITEM "CONCRETE APPROACH SLABS (CAST-IN-PLACE)." QUANTITIES ARE FOR INFORMATION PURPOSES ONLY.
- 3. FOR HANDLING PURPOSES, #4 BARS OVER 40' MAY BE SPLICED WITH A 1'-9" MIN. LAP SPLICE. ALL SPLICES TO BE STAGGERED. (1'-9" SPLICE INCLUDED IN ESTIMATED QUANTITIES.)



VARIABLES (SEE PLAN VIEW, SHT. 1 OF 2)			
VARIABLE	15° SKEW	30° SKEW	45° SKEW
N ₁	67	55	38
N ₂	20	43	75
N ₃	37	43	52
N ₄	26	20	12
L ₁	33'-6"	27'-6"	19'-0"
L ₂	10'-0"	21'-6"	37'-6"
L ₃	36'-7"	42'-9"	51'-3"
L ₄	26'-1"	19'-11"	11'-6"
L ₅	45'-4 1/4"	51'-6 3/4"	60'-0"
L ₆	34'-7 3/4"	28'-5 1/2"	20'-0"



STATE OF LOUISIANA
 ADAM LANCASTER
 License No. 35573
 PROFESSIONAL ENGINEER
 IN
 CIVIL ENGINEERING
 6/19/17

SHEET NUMBER	DESIGNED A. LANCASTER	PARISH	CONTROL SECTION	STATE PROJECT
	CHECKED R. MORVANT			
	DATE			
	REVIEWED Z.Z. FU			
	SERIES # 2 OF 2			
	BY			
	REVISION OR CHANGE ORDER DESCRIPTION			
	NO.			
	DATE			
APPROACH SLAB QUANTITIES 40' LONG & 40' CLEAR ROADWAY GIRDER SPANS EXCLUDING QUAD BEAMS BD.2.10.2.6.04 - APPROACH SLAB				
BRIDGE AND STRUCTURAL DESIGN				